

## MCSmart

**4** INDUSTRY 4.0  
**READY**

Continuous data logging software for monitoring, quality control and material management

MCSmart monitors the performance of all gravimetric Movacolor systems controlled from one to unlimited number of touch screen controllers.

The system is based on a SQL database for 24/7 of data collection. Data can be retrieved at any time, even after months.

MCSmart can be installed as stand alone or a server/client application. Multiple desktop users can access the database. Available functions depend on used login level securing any risk of unintended use.

An unlimited reporting function for generating material consumption reports and alarm summary reports is at your disposal.

Connection is established via standard LAN network. The software can be installed on any standard PC, stand alone or in a central server configuration.

All recipes can be made and managed in this system. These recipes are synchronized to individual units and can either be activated locally or remote, taking away any possible operator mistakes.

The remote operation option allows you to duplicate the touch screen on your computer and perform all operations, as if you were in front of the unit.



### Features

- Real time monitoring
- Data logging
- Reporting
- Material management
- Recipe management
- Back-up and restore



### Continuous data logging

All process parameters are continuously stored in a database. Data can be retrieved and analyzed at any time.



### Reporting

Custom reports can be generated for a daily journal of material consumption and product quality.

### Material and recipe management

Recipes can be created, edited and deleted. Changes are synchronized to the touch screen controller. Materials can be selected and linked to a recipe. Recipes and materials can be saved for back-up / restore requirements.

**MOVACOLOR LEADING INNOVATOR IN DOSING TECHNOLOGY**

For almost three decades, Movacolor has been dedicated to coloring the world in a sustainable way. We do so by developing high-precision gravimetric and volumetric dosing systems. Our knowledge, experience and innovation capabilities are invested in a comprehensive portfolio of user-friendly products. These work easily and effortlessly together in advanced systems that conserve additives, increase production flexibility and deliver excellent results.

## MCSmart

### Technical specifications

#### SYSTEM REQUIREMENTS

- Windows 7, Windows 8, Windows 10
- Intel i5 processor or higher
- 3 gigabytes of RAM
- 10 gigabytes of free hard disc space
- 10/100/1000 Mbs Ethernet port

#### COMPATIBLE MOVACOLOR UNITS

MCTC with software version 2.1.0 or higher

#### DATA LOGGING CAPABILITIES

- All process data per shot (injection molding) or per time interval (minimum 1 sec)
- 24/7 data logging
- SQL database
- Material consumption per batch, based on order number

#### DATA EXPORT / REPORTING

- Different export options (.xlsx, .xls, .csv and more)

#### VIEW OPTIONS (SUMMARY)

- Status overview multiple units
- Individual unit settings
- Data table all parameters
- Graph three parameters, multiple graphs

#### RECIPE FUNCTIONALITY

- Download recipes from controller
- Make / modify / delete recipes
- Upload recipes to controller
- Activate selected recipe in controller

#### REMOTE OPERATION

Full screen replication via VNC

#### TROUBLE SHOOTING OPTIONS

- Download event and alarm log
- Full remote operation
- Back-up and upload configuration

#### LOCALIZATION

- Multilingual user interface
- Metric and imperial units supported

#### LICENSES

Three levels of licenses are available: Basic, Standard and Advanced



20160928-1

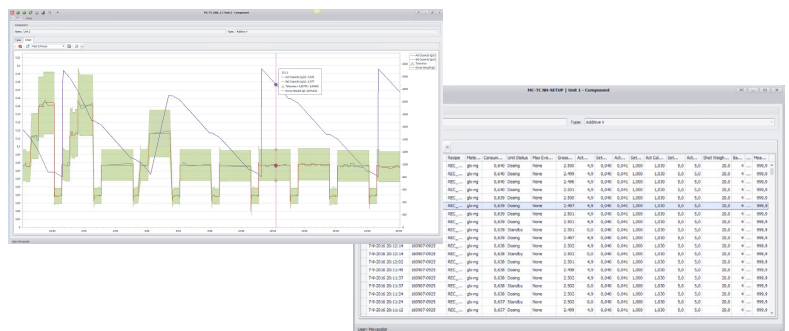
## Consumption Report



Order Number	20160928-1
Order Start	28.09.2016 18:55:58
Order End	29.09.2016 11:51:32
Order Used Recipe	
Machine Name	MC-TC-Ext4
Group Name	Ext4
Group Consumption	57,15497 gram
Unit Name	Hammade
Unit Type	Weight
Component Name	HAMMADE
Component Material	MCWEIGHT
Component Consumption	892,2078 gram
Unit Name	Kataliz
Unit Type	Balance

### Detailed table or graph view

Historical data can be analyzed using a detailed table or a graph view. By means of a "date picker" production data of months ago can be recalled. In detailed table view multiple filter options can be used to find the right data.

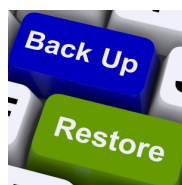


### Server / client



Multiple users can access the historical production data simultaneously for report generation or activating a recipe and starting a new production order.

### Back-up and restore



#### Configuration

Download of MCTC controller configuration for back-up and restore requirements.

#### Materials and recipes

Recipes and materials can be saved to the local drive for back-up and restore purposes, but also for copying a recipe or material to another production line.