

## MCWeight

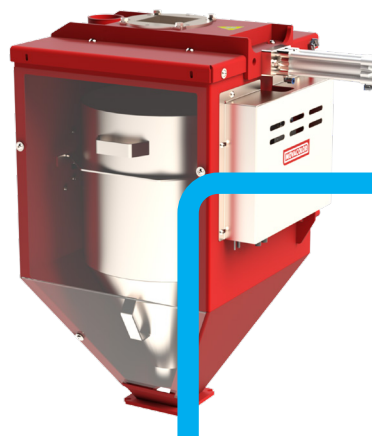
Self-regulating material measuring system for extruders

The MCWeight is specially designed to measure the actual feed capacity of an extruder. It has an integrated weighing module to accurately measure throughput and an integrated knife valve to control the filling.

Combined with one or more Movacolor units, the MCWeight tracks even the smallest capacity variation of the extruder. It adjusts the additive dosing from the dosing units accordingly.

Dried material with a temperature up to 180 °C can be handled with the MCWeight.

This throughput measurement system enables you to get the best out of your extrusion line. It gives you real time insight into your actual line capacity and tracks the consumption of your materials. In combination with our MCLine Control it can even control your complete extrusion line including upstream and downstream equipment.



### Features

- For granulates, regrinds and free-flowing powders
- Continuous loss-in-weight measuring
- Fast response to capacity changes
- Automatic filling through an integrated, pneumatic knife gate in top flange
- Control via 8" full color touch screen
- Available in 50, 100, 500 or 1,200 kg/h



### Plug and play

The MCWeight can be connected to up to 14 Movacolor dosing units. No interface control with the extruder is required. Per co-extruder you can install an MCWeight that allows the controlling of multiple MCWeight units with one control interface.



### Quality control

Quality is controlled by continually monitoring data from both the MCWeight and the dosing units. The MCSmart program gives you this maximum control. With the MCLine Control you can even fully control the extrusion line.



### Basis for full control of your extrusion line

The MCWeight is the perfect basis for your MCContinuous Blender or for your MCLine Control system.

## MOVACOLOR LEADERS IN DOSING TECHNOLOGY

For almost three decades, Movacolor has been dedicated to coloring the world in a sustainable way. We do so by developing high-precision gravimetric and volumetric dosing systems. Our knowledge, experience and innovation capabilities are invested in a comprehensive portfolio of user-friendly products. These work easily and effortlessly together in advanced systems that conserve additives, increase production flexibility and deliver excellent results.

## MCWeight

### Technical specifications

#### CAPACITY

MCW50: 0.5-50 kg/h\*  
 MCW100, MCW500, MCW1200: 10-1,200 kg/h\*  
 Processed material max. temperature: 180°C  
 (MCW50 standard 70°C, MCW50 high temperature version 150°C)

#### APPLICATION

Extrusion

#### COMMUNICATION

Modbus TCP/IP, Profibus\*\*, Profinet\*\*, OPC-UA\*\*

#### DATA STORAGE

Internal memory (static changes), MCSmart data logging software (dynamic changes)

#### POWER SUPPLY

95-250 VAC, 50/60 Hz. By integrated automatic voltage selector

#### POWER CONSUMPTION

150 Watt maximum

#### LANGUAGES

English, German, Dutch, French, Hebrew, Turkish, Chinese, Thai, Japanese, Russian, Italian, Czech, Portuguese, Spanish, Indonesian, Polish, Korean, Hungarian, Swedish, Romanian\*\*\*

#### OPERATION

8" full color touch screen display

#### INPUT SIGNALS

Start input: potential free, 24 VDC. Extruder tachometer (0-30 VDC)

#### OUTPUT SIGNALS

Alarm, warning, run, 2x0-10 VDC\*\* or 4-20 mA\*\*

\* measured with a bulk density of 0.8 kg/dm<sup>3</sup>

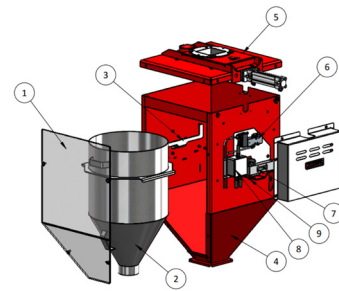
\*\* optional

\*\*\* additional languages on request

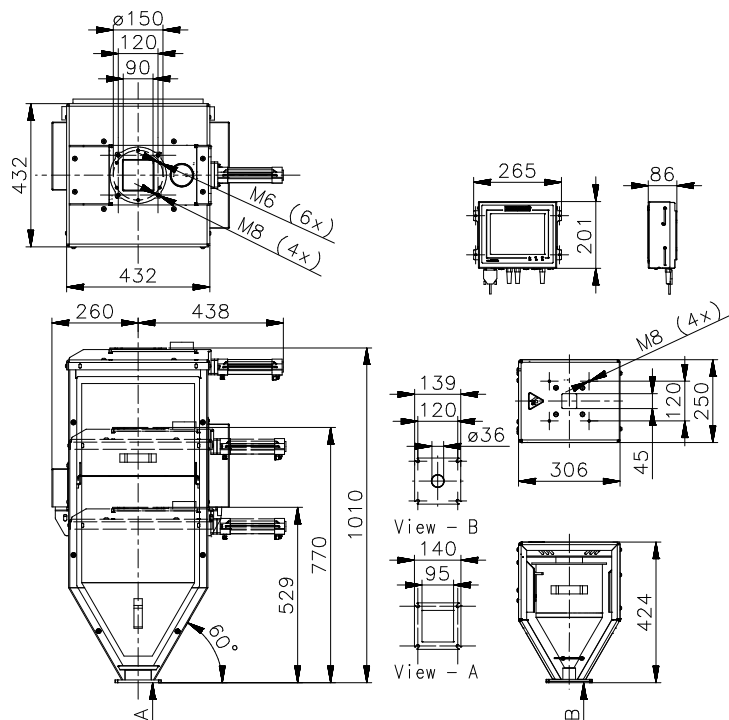


#### Exploded view MCW100, MCW500, MCW1200

- 1 Window
- 2 Weighing hopper
- 3 Framework
- 4 Body
- 5 Lid including knife gate
- 6 Solenoid valve for knife gate
- 7 Load cell (2 x)
- 8 Connection box for load cells
- 9 Load cell safety bolt



#### Dimensions



MCW100, MCW500 and MCW1200

MCW50